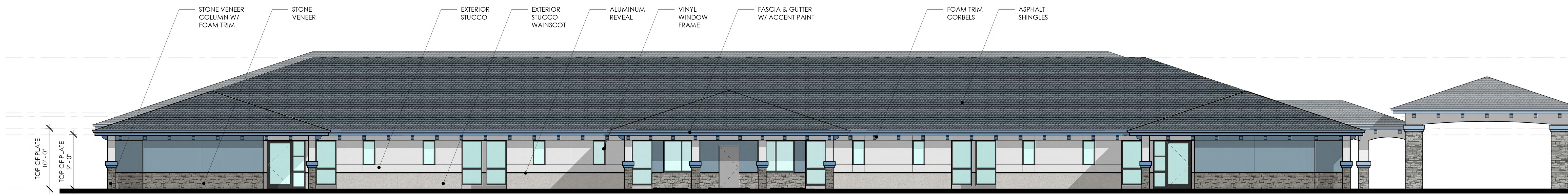


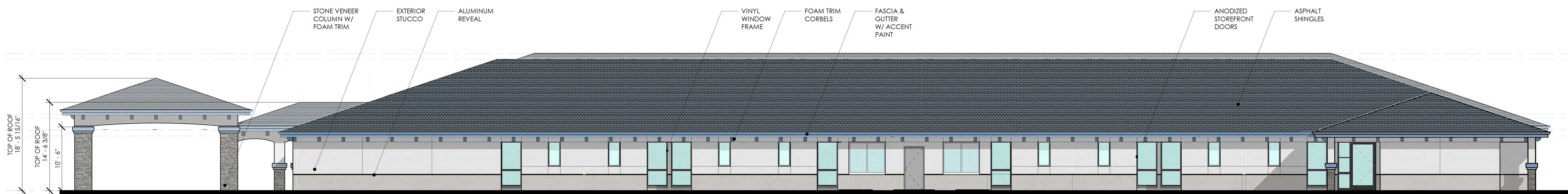
ELEVATION 1 - FRONT VIEW



ELEVATION 2 - STREET VIEW



ELEVATION 3 - BACK OF HOUSE VIEW



ELEVATION 4 - WATERSHED OPEN SPACE VIEW

EXTERIOR ELEVATIONS | SCALE 1/8" = 1'-0"

ROSEVILLE POST ACUTE

RANGCOMM DEVELOPMENT

PROJECT INFORMATION - SNF

APN: 363-011-013-000
 CITY: ROSEVILLE, CA

BUILDING DATA
 OCCUPANCY: I-2 SKILLED NURSING FACILITY (HCAI 2)
 CONSTRUCTION TYPE: TYPE V-A, ONE-HOUR
 FIRE SPRINKLED: YES
 STORIES: ONE

BUILDING AREA

BUILDING 100	16,751 SF
BUILDING 200	18,918 SF
BUILDING 300	18,563 SF
TOTAL BUILDING AREA	54,232 SF

BED COUNT

BUILDING 200 - SNF (HCAI 2)			
PRIVATE	1-BED	2 ROOMS X 1	2 BEDS
SEMI PRIVATE	2-BEDS	29 ROOMS X 2	58 BEDS
TOTAL BEDS			60 BEDS
BUILDING 300 - SNF (HCAI 2)			
PRIVATE	1-BED	2 ROOMS X 1	2 BEDS
SEMI PRIVATE	2-BEDS	29 ROOMS X 2	58 BEDS
TOTAL BEDS			60 BEDS
TOTAL BED COUNT (HCAI 2)			120 BEDS

PARKING INFORMATION

PARKING REQUIREMENTS:
 1 STALL PER 3 EMPLOYEES
 140 EMPLOYEES
 140/3
 47 STALLS

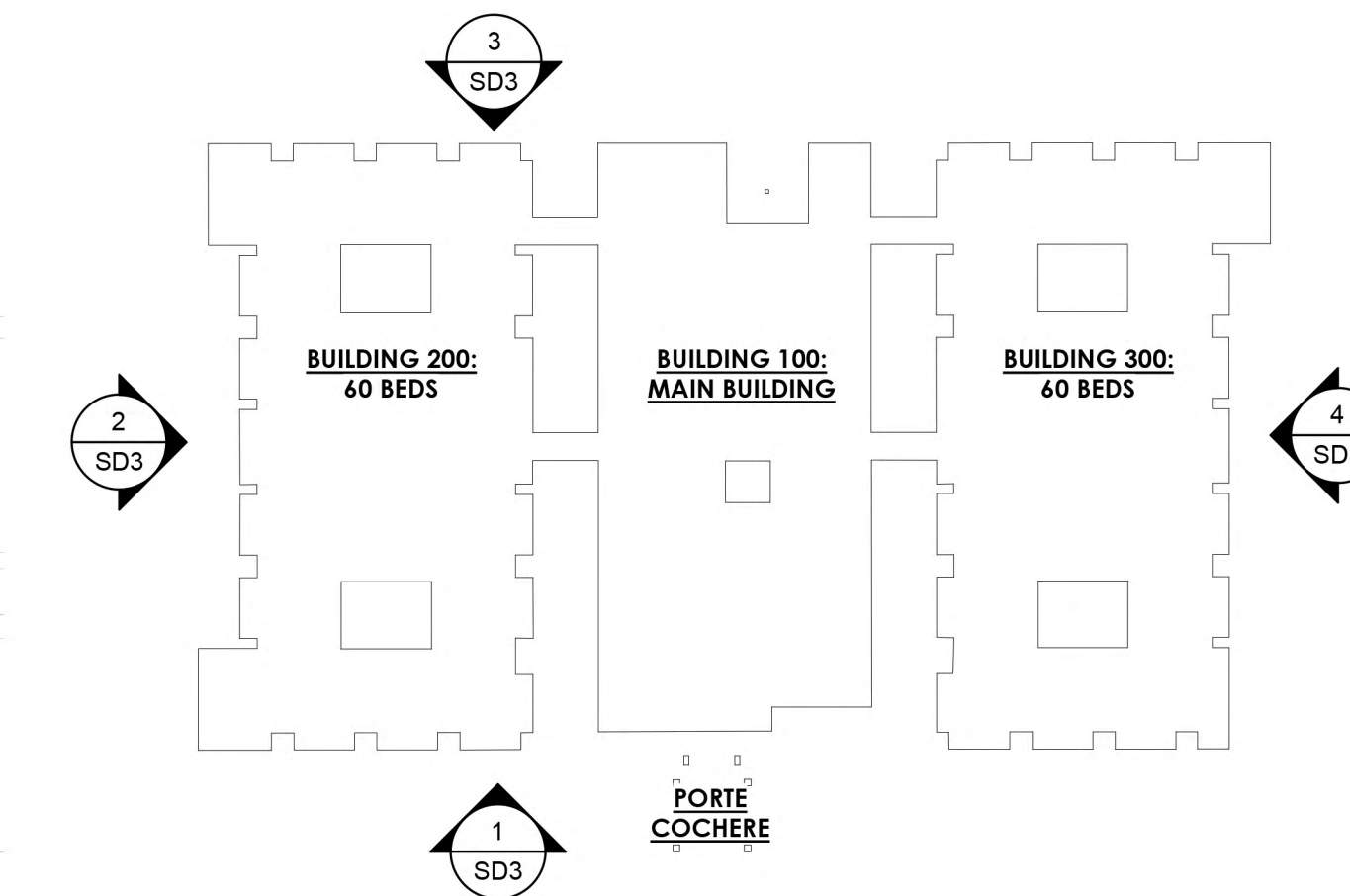
1 STALL PER 3 BEDS
 120 BEDS
 120/3
 40 STALLS

TOTAL REQUIRED PARKING
87 STALLS

PROVIDED PARKING:
 STANDARD STALLS
 ACCESSIBLE STALLS
 92 SPACES
 15 SPACES

TOTAL PARKING
107 SPACES

KEY PLAN



ARCHITECTURE + INTERIORS + PLANNING
 321 NORTH RAMPART STREET, SUITE 101
 ORANGE, CA 92868 . P: 714.937.1985
 PROJECT#: 22008 . OCTOBER 5, 2022



PA:2022-0008-PA-3 Working Files\AWA\Architecture\Media\2022-10-14_detailed\22008_Roseville_PA_detailed.rvt
 10/15/2022 11:13 PM